

Greenspring Homes

"Handcrafted with Extraordinary Detail"



THE ROOSEVELT III FARMHOUSE

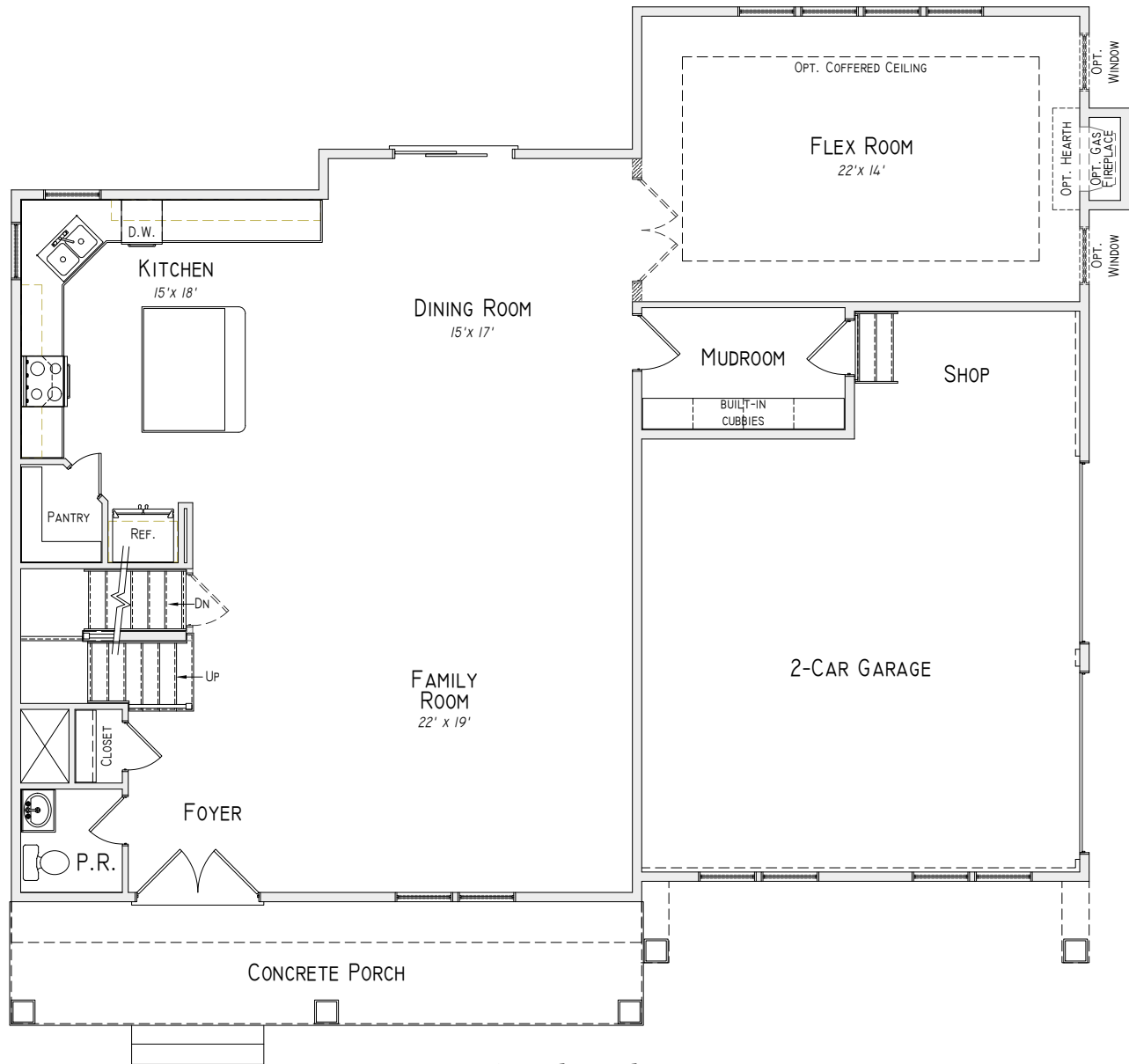
Four Bedroom, 2 1/2-Bath, 2-Car Garage

2023-10-23

GreenspringHomes.net



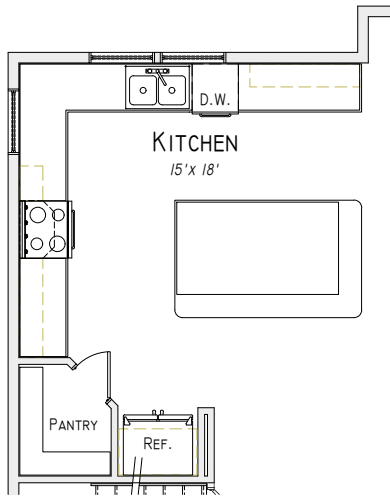
MHBR #6375



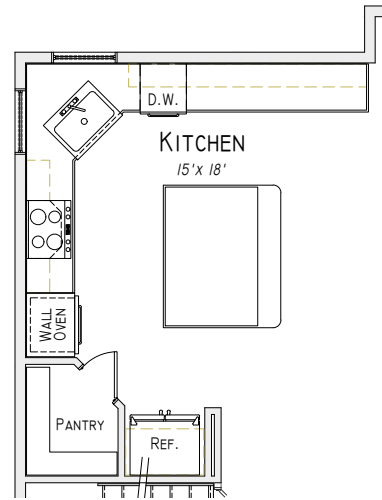
First Floor Plan

Details and dimensions shown on the floor plans are approximate, not to scale and subject to change. Illustrations are artist concepts and may vary in detail from floor plans and specifications.

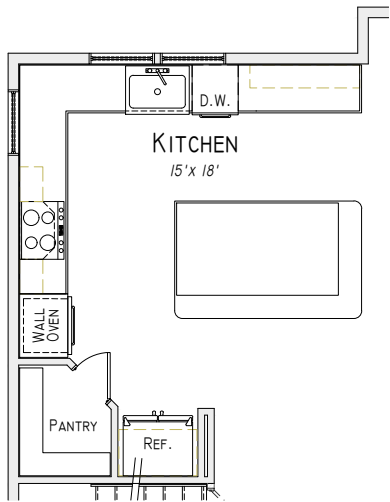




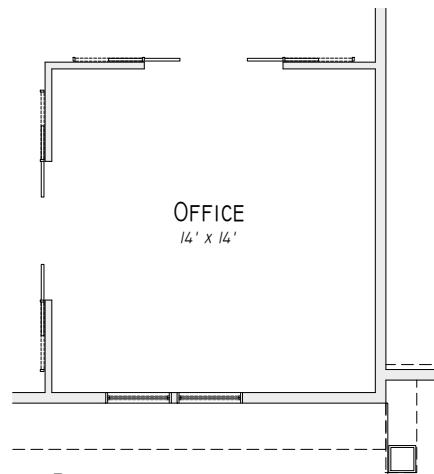
*First Floor Plan w/
Optional Alternate Kitchen*



*First Floor Plan w/
Optional Gourmet Kitchen*



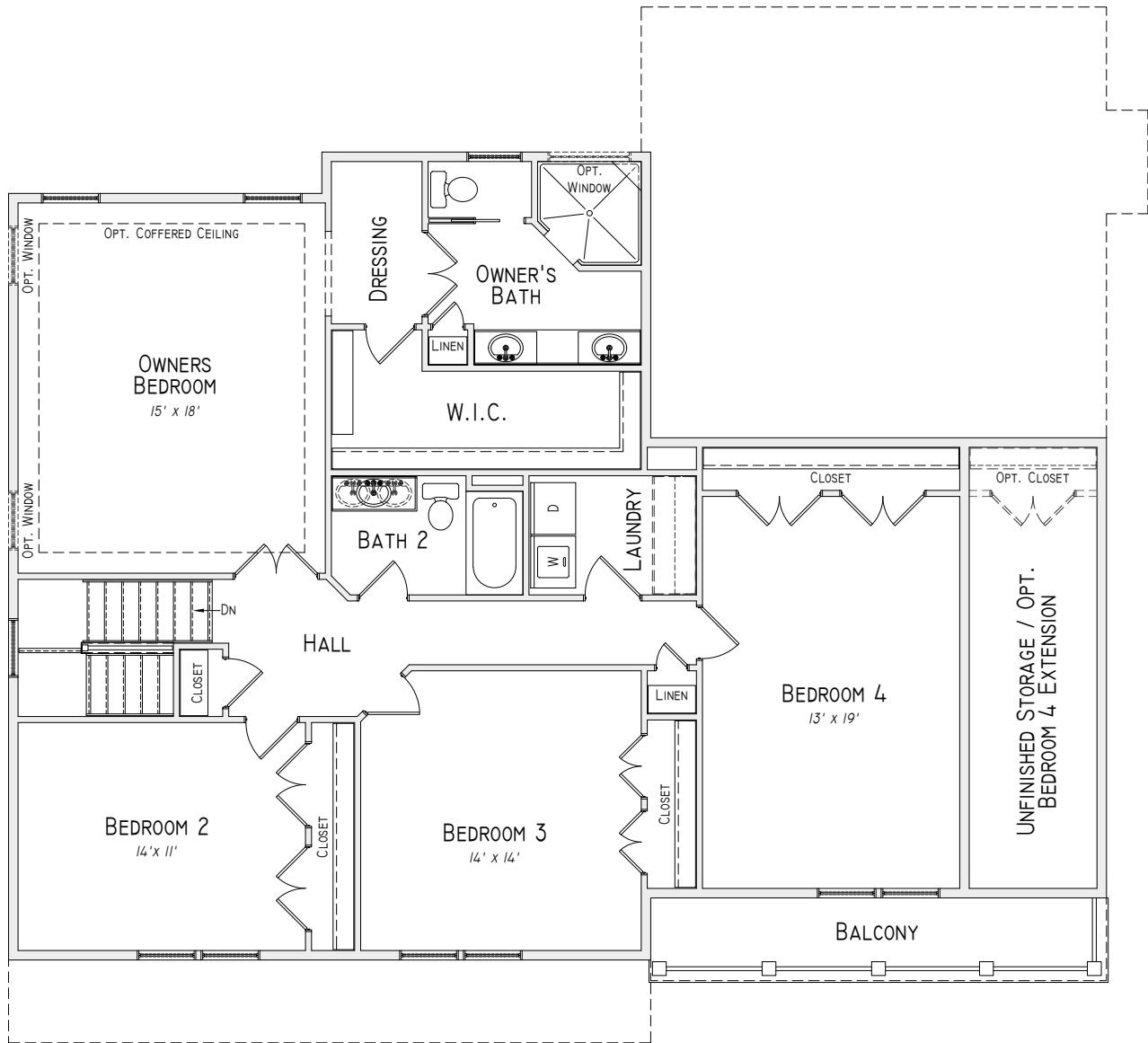
*First Floor Plan w/ Optional
Alternate Gourmet Kitchen*



*First Floor Plan w/
Optional Office*

Details and dimensions shown on the floor plans are approximate, not to scale and subject to change. Illustrations are artist concepts and may vary in detail from floor plans and specifications.

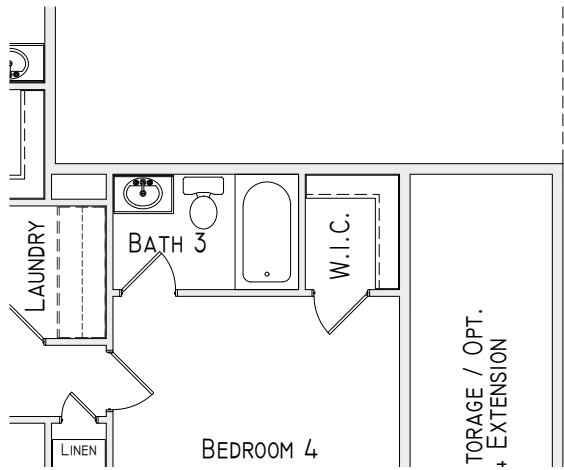




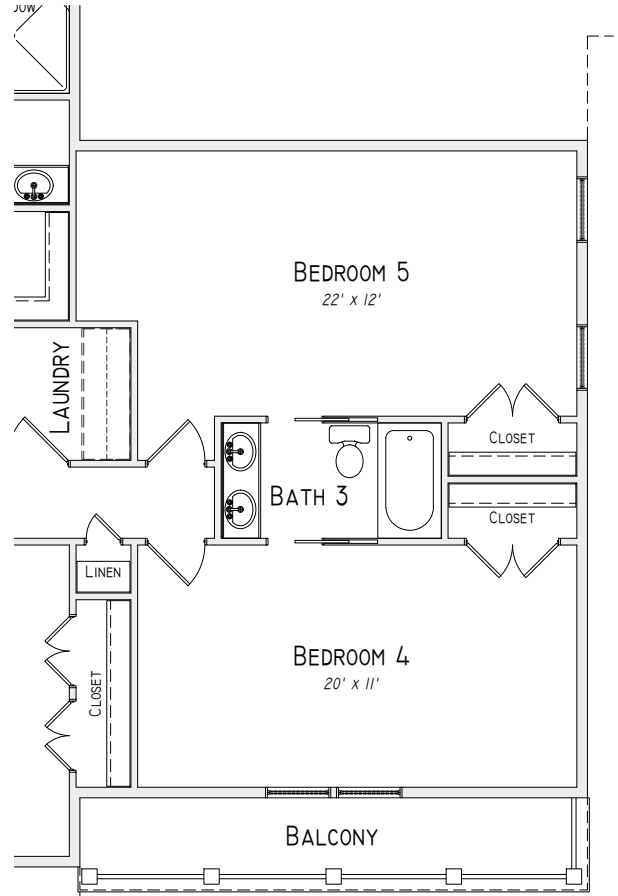
Second Floor Plan

Details and dimensions shown on the floor plans are approximate, not to scale and subject to change. Illustrations are artist concepts and may vary in detail from floor plans and specifications.

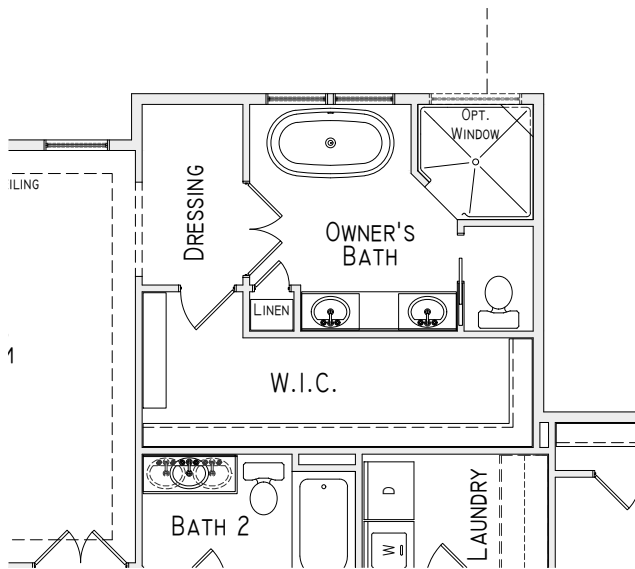




Second Floor Plan w/ Optional Bath 3



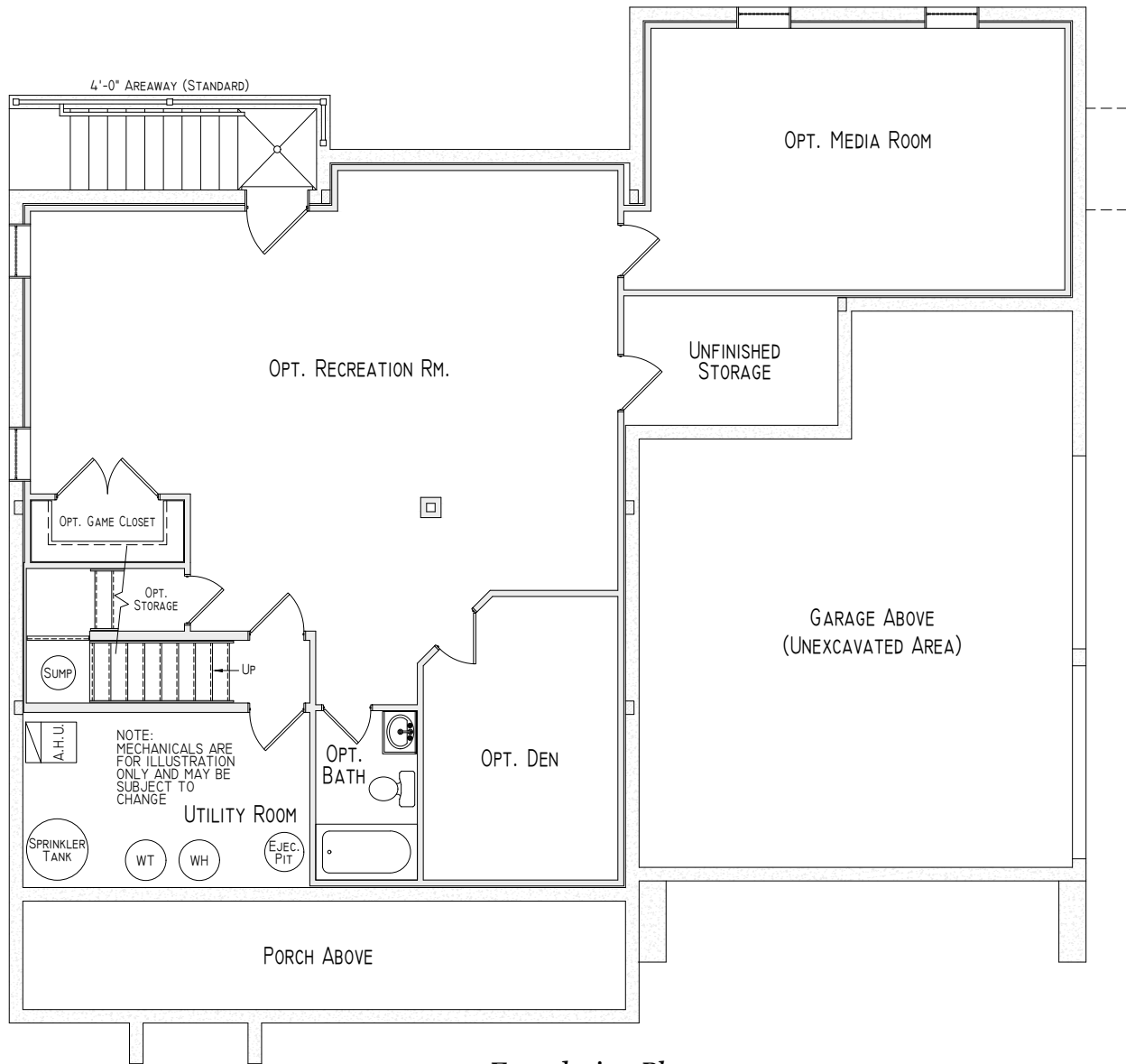
Second Floor Plan w/ Optional Bedroom 5



Second Floor Plan w/ Optional Alternate Owner's Bath

Details and dimensions shown on the floor plans are approximate, not to scale and subject to change. Illustrations are artist concepts and may vary in detail from floor plans and specifications.





Foundation Plan

Details and dimensions shown on the floor plans are approximate, not to scale and subject to change. Illustrations are artist concepts and may vary in detail from floor plans and specifications.

